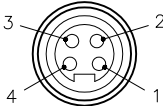

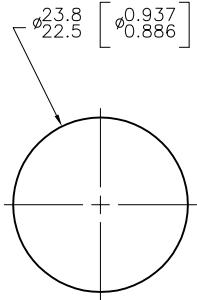
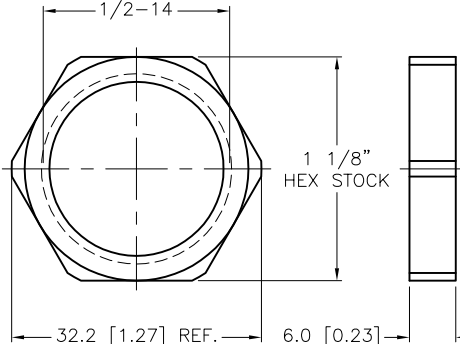
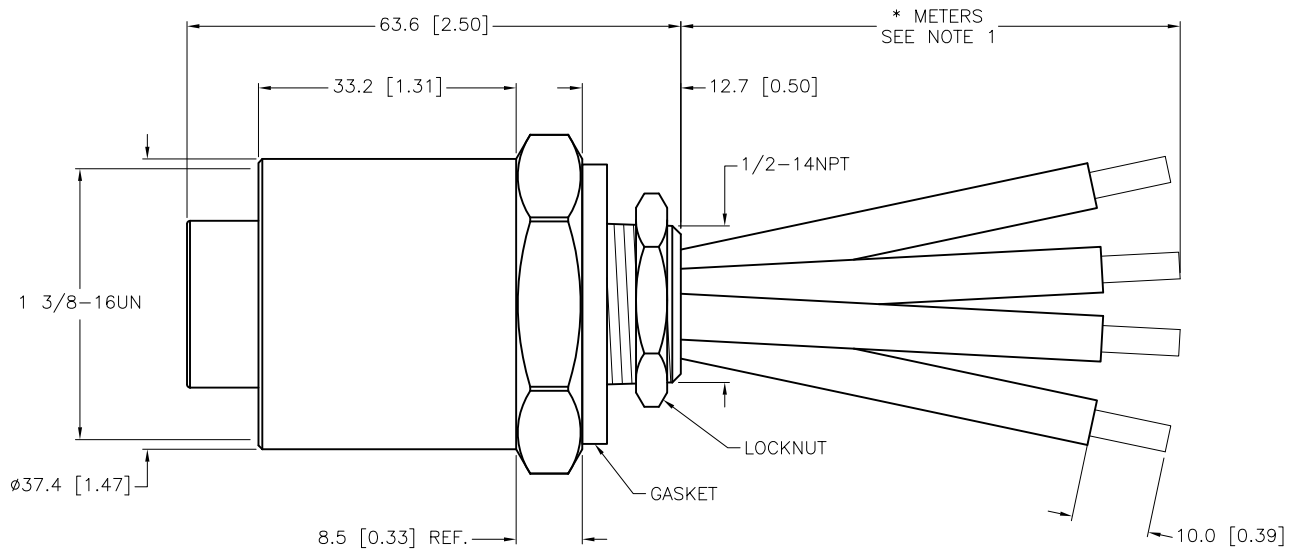
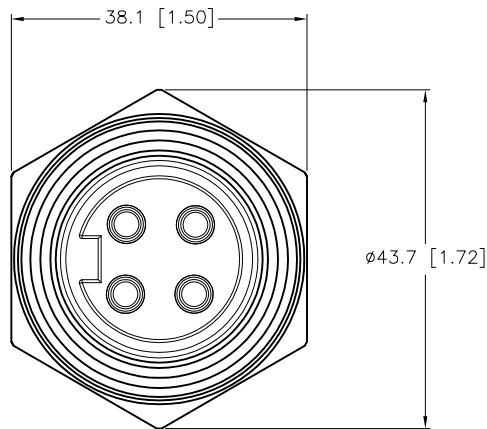


| FEMALE END VIEW | PANEL CUTOUT | LOCKNUT | SPECIFICATIONS | |
|---|---|--|-------------------------------|---|
|  <p>1 = BLACK 2 = GREEN 3 = RED 4 = WHITE</p>  |  |  | CONTACT CARRIER MATERIAL | PVC |
| | | | CONTACT MATERIAL/PLATING | BRASS or COPPER/GOLD |
| | | | HOUSING MATERIAL/FINISH | ALUMINUM/CLEAR-ANODIZED |
| | | | GASKET MATERIAL | NITRILE (BUNA-N) |
| | | | RATED CURRENT [A] | 25 A |
| | | | RATED VOLTAGE [V] | 600 V |
| | | | CONDUCTOR INSULATION MATERIAL | PVC |
| | | | NUMBERS OF CONDUCTORS [AWG] | 4x10 AWG |
| | | | TEMPERATURE RATING | -40°C to +105°C (-40°F to +221°F) |
| | | | PROTECTION CLASS | MEETS NEMA 1,3,4,6P AND IEC IP67, IP68, IP69K |
| | | | MAXIMUM PANEL THICKNESS | 6.0mm [.236] |



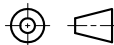
| CABLE LENGTH | TOLERANCE * |
|------------------------------|---|
| ALL LENGTHS | + 4% (OR 50mm) OF LENGTH - 0% (OR 0mm) OF LENGTH WHICHEVER IS GREATER |
| STRIP LENGTH | TOLERANCE * |
| 0-7mm | ±0.5mm |
| 8-29mm | ±1.0mm |
| 30-49mm | ±2.0mm |
| 50-69mm | ±3.0mm |
| 70-100mm | ±4.0mm |
| OVER 100mm | ±5.0mm |
| * UNLESS OTHERWISE SPECIFIED | |

NOTES:

1. "*" INDICATES LEAD LENGTH IN METERS. CONTACT TURCK TO ORDER SPECIFIC LENGTHS.



SOURCE DRAWING - FOR REFERENCE ONLY

| | | | | | | | | | |
|---|--|---|---------------------|--|-----------------|--|--------------|---|--|
| RELATED DOCUMENTS 1. 2. 3. 4. | 3RD ANGLE PROJECTION |  | | THIS DRAWING IS CONFIDENTIAL AND THE PROPERTY OF TURCK INC. USE OF THIS DOCUMENT WITHOUT WRITTEN PERMISSION IS PROHIBITED. | | <div>TURCK inc</div> <div>High Technology Sensors and Automation Controls</div> | | 3000 CAMPUS DRIVE MINNEAPOLIS, MN 55441 1-800-544-7769 (763) 553-7300 (763) 553-0708 fax turck.com | |
| | | | | | | | | | |
| MATERIAL | ALL DIMENSIONS DISPLAYED ON THIS DRAWING ARE FOR REFERENCE ONLY | DRFT | RDS | DATE | 12/18/08 | DESCRIPTION GK DFA 40-*M/14.5/NPT | | | |
| SEE SPECIFICATIONS | | APVD | | SCALE | 1=1.0 | | | | |
| FINISH | | CONTACT TURCK FOR MORE INFORMATION | UNIT OF MEASUREMENT | | | IDENTIFICATION NO. | | REV B | |
| SEE SPECIFICATIONS | | | MILLIMETER [INCH] | | | | | | |
| | | DO NOT SCALE THIS DRAWING | | | FILE: 777023449 | | SHEET 1 OF 1 | | |

| | | | | |
|-----|--|-----|----------|---------|
| B | DRAWING PROCESSED AS PART OF ECO 39011 | KMY | 06/12/12 | 39011 |
| REV | DESCRIPTION | BY | DATE | ECO NO. |